

(3) ONLINE AUCTIONS & PRIVATE TREATY SALE

(4) Phases –
Surplus to the
Ongoing
Requirements of



**6.5M
BETWEEN
COLUMNS**

CKD BLANKSO 50E – PHASE 1



SKODA W200HBNC – PHASE 1

PHASE 4 – PRIVATE TREATY
LARGE CAPACITY HORIZONTAL
LATHES, CNC TURNING CENTERS
& CONVENTIONAL MACHINE TOOLS

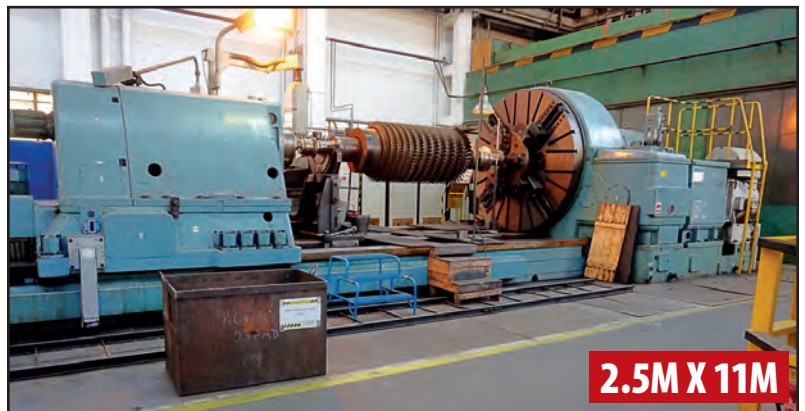
FEATURING: SKODA SIU 250T HEAVY DUTY CENTER LATHE,
SKODA SUT 126 LATHE, JOHNFORD OMNITECHNIQUE
SL-80A 2-AXIS CNC LATHE, OTA 450 AC-1860 CHALLENGER
LATHE, NAGEL VERTICAL HONE, TOS BHU 40/2000
UNIVERSAL GRINDER, TOS BPV 40 VERTICAL SPINDLE
RECIPROCATING TABLE SURFACE GRINDER

PHASE 1 – AUCTION
LARGE CAPACITY BORING MILLS, TURNING
LATHES, TOOLROOM & FABRICATION

FEATURING: JOHNFORD VMC-2000SHD OMNITECHNIQUE SUPER
VERTICAL MACHINING CENTER, TOS KURIM FSQ 80 CNC BEDMILL,
CKD BLANKSO SK50E TWIN COLUMN VERTICAL TURRET LATHE,
CKD BLANKSO TYPE 4000 TWIN COLUMN VERTICAL TURRET LATHE,
SKODA TYPE W200HBNC FLOOR BORER, TOS KURIM INDEXING HEAD
PLUS MANY OTHERS

PHASE 2 – AUCTION
LARGE QUANTITY OF MACHINE TOOLING,
FLOOR PLATES & FIXTURES
FEATURING: HEATED STEEL TABLES, SLOTTED CUBES, FLOOR & ANGLE
PLATES, CABINETS WITH ASSORTED TOOLING & CLAMPING SETS

PHASE 3 – AUCTION
LARGE QUANTITY OF MACHINE TOOLING &
WELDING EQUIPMENT
FEATURING: LORCH & ESAB MIG WELDERS, WELDING ROTATORS,
MACHINE TOOLING, FLOOR PLATES, FIXTURES & MORE



SKODA SIU 250T – PHASE 4

2.5M X 11M

Auctions Closing From:
Wednesday, February 6 &
Thursday, February 7 at 3:00 PM GMT
Inspection: Available By Appointment Only
Sale Location: Prague, Czech Republic



**PERFECTION
Industrial Sales**

Online Bidding at www.cottandco.com

Perfection Industrial Sales
ph +1-847-545-6374 • fax +1-847-427-8884
www.perfectionindustrial.com

Sale is Being Held
in Conjunction With:

Cottrill & Co.
WORLDWIDE ASSET DISPOSALS

+44 (0)121-328-2424 • www.cottandco.com

VERTICAL TURRET LATHES, HORIZONTAL BORING MILLS, PLANER MILL, VERTICAL MACHINING CENTER



**6.5M
BETWEEN
COLUMNS**

CKD BLANKSO 50E



**4M
BETWEEN
COLUMNS**

CKD BLANKSO 4000

**PHASE 1:
Closes
February 6**

VERTICAL TURRET LATHES

1974 CKD BLANKSO 50E TWIN-COLUMN RAM TYPE VERTICAL TURNING LATHE, Table/Chuck Size: 4.76m, 6.5m Distance Between Columns, Height 4m w/Side Head and Segmented Grinding Head and Copying, s/n 50101-27

CKD BLANKSO 4000 TWIN-COLUMN RAM TYPE VERTICAL TURNING LATHE, w/Side Head and Segmented Grinding Head, Copying, Chuck Size: 3.75m, 4m Distance Between Columns, Height 3m, s/n 40034-9

TOS HULIN SKQ 20NC VERTICAL TURRET LATHE, w/KNS421 Control, Chuck Size: 2m, s/n 2212019

1981 TOS HULIN SK1Q 16CNB VERTICAL TURRET LATHE, Chuck Size 1.6m, s/n 2212047

TOS HULIN SKQ12 NC VERTICAL TURRET LATHE, Chuck Size: 1250mm, s/n 2212042

TOS SK16 VERTICAL TURRET LATHE, Chuck Size 1.6m, s/n 22120462



SKODA W200HBNC



SKODA WD200



SKODA WDA200

HORIZONTAL BORING MILLS

1986 SKODA W200HBNC HORIZONTAL FLOOR BORER, Approx. Rail Size: 19m, 3500 x 4000mm Rotary Table, (9) x Various Milling/Drilling Heads, Floor Plates, Angle Plates, Sinumerik System 8 CNC, s/n ob18639GO

1988 SKODA WD200 HORIZONTAL FLOOR BORER, Rail Size: 7.5m Approx., s/n ob18639GO

SKODA WDA200 HORIZONTAL FLOOR BORER, Rail Size: 7m Approx., s/n ob18638

SKODA WDA200 HORIZONTAL FLOOR BORER, Approx. Rail Size: 10m

SKODA WD160 HORIZONTAL FLOOR BORER, Rail Size: Approx. 6m, s/n ob17205



TOS KURIM FRPD16X30

PLANER MILL

TOS KURIM FRPD16X30 4-HEAD PLANER MILL, Table Size: 6m x 1.6m, s/n 39920

VERTICAL MACHINING CENTER

2008 JOHNFOR VMC-2000SHD OMNITECHNIQUE SUPER VERTICAL MACHINING CENTER, w/Fanuc 21i-MB, 40-Station ATC, Table Size: 2.2m x 1m, Subtable 980mm x 980mm, s/n VDB8053



JOHNFOR VMC-2000SHD

2008

To discuss your requirements for an auction, please call Perfection Industrial +1-847-545-6374

View our current auction schedule at www.perfectionindustrial.com

Online Bidding at www.cottandco.com

WORKHOLDERS/TOOLING, CONVENTIONAL MACHINE TOOLS, FABRICATING, PLANT SUPPORT

PHASE 1: Closes Wed., February 6 at 3:00 PM GMT



2008

GOLDEN SUN INDUSTRIAL CMC-631RV

WORKHOLDERS/TOOLING

2008 GOLDEN SUN INDUSTRIAL CO. CMC-631RV 4TH AXIS UNIT, Chuck Size: 630mm, s/n 0863076

SKODA HBM POWERED ROTARY TABLES, Floor Plates, Right Angle Heads, Universal Machining Heads, Outer Steadies, Etc

RISER BLOCKS

ASSORTED LOTS OF CHUCK JAWS, w/Riser Plates for CKD Blankso VTLs

CABINETS W/TOOLING FOR TOS VTLs



TOS SN55-71



TOS SUS63



1987

ZDAS CDN 400-C3

CONVENTIONAL MACHINE TOOLS

TOS SN55-71 CENTER LATHE, 2m Distance Between Centers, 310mm 4-Jaw Chuck, 3-Jaw Steady, s/n 250620124

TOS SUS63 LATHE, Distance Between Centers 1.4m, 4-Jaw Chuck 310mm, 3-Jaw Chuck 310mm, 3-Point Steady, s/n 0440704

TOS SU50 LATHE, 1.6m Distance Between Centers, 310mm 3-Jaw Chuck, s/n 21205421

MAS VRP84A TRAVELLING COLUMN RADIAL DRILL, Throat Size: 4m, Bed Size: 7m, s/n 159230002

MAS VR4A RADIAL DRILL, 1.4m Box Table 1m x 750mm x 500mm

MAS VRM 50A PORTABLE RADIAL DRILL

HOLROYD 5A H5AC PUMP ROTARY MILLING MACHINE

HOLROYD HAS 5A PUMP ROTARY MILLING MACHINE

TOS FA5B VERTICAL MILL, Table Size: 2m x 450mm, s/n 1167 95 40324

TOS VA4V VERTICAL MILL, Table Size: 1.6m x 310mm

TOS F20 MILL, Table Size: 1.4m x 300mm

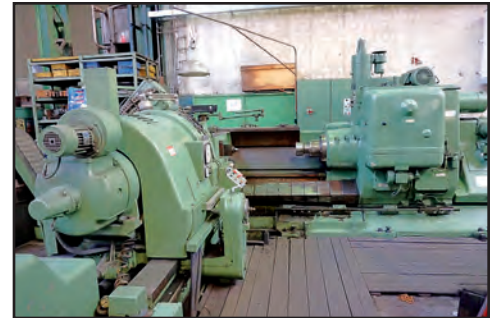
TOS FA5B HORIZONTAL MILL, Table Size: 1.9m x 450mm, s/n 116795237161

HOV 40 SLOTTING MACHINE, Table Size: 800mm, s/n 58-4014

SLOTTING MACHINE, Table Size: 500mm



STROJAREN 3000 X 6.3MM



HOLROYD 5A H5AC

FABRICATING

1987 ZDAS CDN 400-C3 STRAIGHTENING PRESS, Bed Size: 9m x 3m Wide, s/n 2436/87

HYDRAULIC 4-PILLAR PRESS, Table Size: 160mm x 175mm

STROJAREN 3000 X 6.3MM GUILLOTINE

TOS XOM 3000 X 4B FOLDER, s/n 0280883

1984 SWISSTOOL KU450 CORNER KNOTCHER/PUNCH, s/n 555

2006 BOMAR ERGONOMIC 320.250 DGS BANDSAW, s/n 659

OERLIKON HYDRAULIC BENDING MACHINE

CIRCLE CUTTER, Throat Size: 950mm

OMES IRON WORKER

ASSORTED WELDING POSITIONERS

PLANT SUPPORT

BESMONT FREE STANDING CRANE SYSTEM, w/Demag Hoists, 3m x 2.5-Ton Bridge Cranes, 25m x 7.5m Wide

TECHNOWASH AQF1750-2 PARTS WASHER, Door Opening Size: 1.8m x 1.7m High (1.77m Diameter Basket)

2014 LINEA ECO-AIR ITALO-M-SV MANUAL PAINT AND WASH BOOTH, Door Opening Size: 2.5m x 3m, s/n L14076

BALKANCAR BATTERY ELECTRIC PLATFORM TRUCK

1996 CLARK DT50E DIESEL TUGGER, s/n CT 360 0040 819 UN



TOS XOM 3000 X 4B



BESMONT FREE STANDING CRANE SYSTEM



TECHNOWASH AQF1750-2



LINEA ECO-AIR ITALO-M-SV



BALKANCAR BATTERY ELECTRIC PLATFORM TRUCK

To discuss your requirements for an auction, please call Perfection Industrial +1-847-545-6374

TABLES & FIXTURES



5M X 3M

HEATED STEEL TABLE



6M X 5M

FLOOR PLATE

PHASE 2: Closes Thursday, February 7 at 3:00 PM GMT

TABLES & FIXTURES

(8) HEATED STEEL TABLES, up to 5m x 3m

(9) FLOOR PLATES, up to 6m x 5m

(19) SLOTTED CUBES / SWIVEL BOX TABLES, Assorted Dimensions

(2) ANGLE PLATES

(25) CABINETS W/CONTENTS; CONTENTS VARY BUT INCLUDE TOOLING, Clamps, Riser Pads, Vises, Parallels and More



ASSORTED CUBES



CUPBOARD W/CLAMPING SETS

WELDING, TOOL PRESETTERS, LARGE QUANTITY OF TOOLING



3 AVAILABLE

LORCH S8



4 AVAILABLE

KEMPER MAXIFIL

PHASE 3: Closes Thursday, February 7 at 3:00 PM GMT



ROTAMATIC ST15

WELDING

(3) LORCH S8 SPEED PULSE MIG WELDERS

(5) ESAB WELDERS, Assorted Specs

ASSORTED KEMPPPI, REHM & SELCO WELDERS

(4) KEMPER MAXIFIL EXTRACTION UNITS

LASAULEC 64.10005 EXTRACTION UNIT

ROTAMATIC ST15 WELDING ROTATORS

TOOL PRESETTERS

2014 EZSET 600 TOOL SETTER MADE EASY, s/n UEZ6C1-00064

BMD 500 TOOL SETTER, w/Heidenhain DRO Invcisio D4/1648

SPERONI VB TOOL SETTER, s/n 00028/2

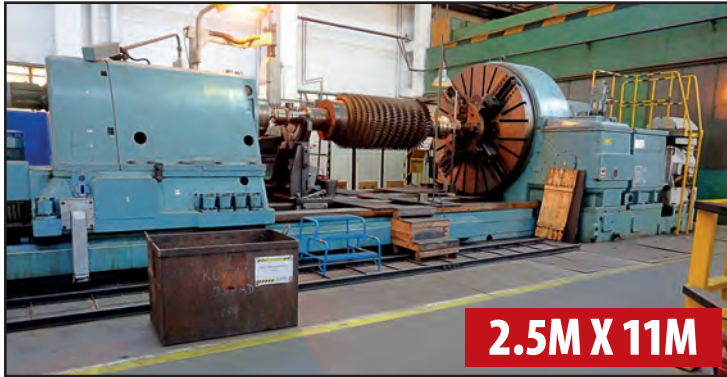
LARGE QUANTITY OF TOOLING

CAT 50 TOOL HOLDERS, ISO 40, 50 AND 60 TOOL HOLDERS, MORSE TAPER TOOLING, TAPPING ATTACHMENTS, DRILLS, BORING HEADS AND BARS, REAMERS, CARBIDE INSERTS, PULL STUDS, EXTENSION TOOL HOLDERS, MACHINE VISES AND MORE

View our current auction schedule at www.perfectionindustrial.com

MACHINE TOOLS

PHASE 4: PRIVATE TREATY SALE



SKODA SIU 250T



SKODA SUT 126



JOHNFORD OMNITECHNIQUE SL-80A



TOS BHU 40/2000

MACHINE TOOLS

1985 SKODA SIU 250T HEAVY DUTY CENTRE LATHE, 2500mm Swing, 11m Between Centers, 4-Way Bed, Internal Grinding Head, Milling/Drilling Head, Steadies, s/n 22730

1987 SKODA SUT 126 LATHE NC X 6000MM, 1260mm Swing, 3-Way Bed, Power Tailstock, Steadies, Distance between Centers 6m, s/n ob23169

2010 JOHNFORD OMNITECHNIQUE SL-80A 2-AXIS CNC LATHE, w/Fanuc 21i-TB Control, Tailstock, 380mm 3-Jaw Chuck, 8-Station ATC, s/n TEJ10016

2008 OTA 450 AC-1860 CHALLENGER LATHE, w/Fagor Control, Duplimatic Turret, 6" Chuck, Manual Gear Change, 200mm 4-Jaw Chuck, 8-Station Turret, s/n A10208A13

NAGEL VERTICAL HONE, s/n 3755

TOS BHU 40/2000 UNIVERSAL GRINDER, Distance Between Centers 2m, s/n 0237499

TOS BPV 40 VERTICAL SPINDLE RECIPROCATING TABLE SURFACE GRINDER, Magnetic Chuck 2m x 410mm, s/n 168160201



TOS BPV 40

View our current auction schedule at www.perfectionindustrial.com

TERMS OF SALE

Buyer's Premium will be charged at 16%. Value added tax will be charged at 21%.

REMOVAL

Removal deadlines and details vary based on sale phase. Please contact the auctioneer for additional details.

FOR FURTHER INFORMATION

Please contact Jennifer Reiner at +1-847-545-6374 or jennifer@perfectionindustrial.com, or Cottrill & Co at +44-(0)121-328-2424 or info@cottandco.com

Auctions Closing From: Wednesday, February 6 & Thursday, February 7 at 3:00 PM GMT

Inspection: Available By Appointment Only

Sale Location: Prague, Czech Republic



**PERFECTION
Industrial Sales**

Online Bidding at www.cottandco.com

Perfection Industrial Sales

ph +1-847-545-6374 • fax +1-847-427-8884

www.perfectionindustrial.com

Sale is Being Held
in Conjunction With:

Cottrill & Co.
WORLDWIDE ASSET DISPOSALS

+44 (0)121-328-2424 • www.cottandco.com